

## Cleaning and Disinfection – Basic microbiology

### Your Objectives:

At the end of the lesson you should be able to report implications of the growth and optimal environment of microorganisms.

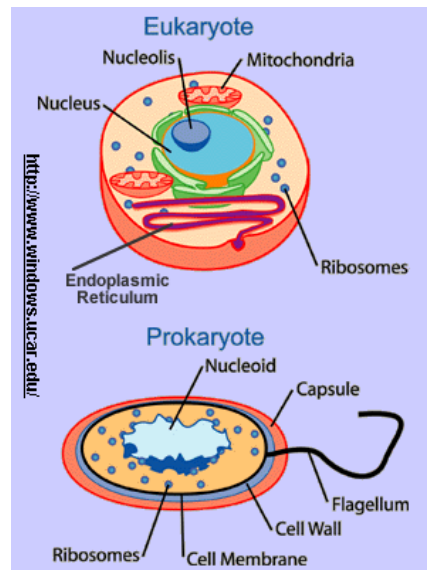
### Introduction to microbiology

are typically invisible to the naked eye; the  of measurement used for microorganisms is the micrometre ( $\mu\text{m}$ );  $1\ \mu\text{m} = 0.001$  millimetre;  $1\ \text{nanometre (nm)} = 0.001\ \mu\text{m}$ . Microorganisms are ubiquitous, which means they are found (with few exceptions\*) everywhere on the planet and are essential to  life processes.

In regard to the food , microorganisms can cause spoilage, possibly causing  in living organisms such as , or they may prevent  (as in the process of fermentation). Bacteria, , , protozoa and  are the major groups of microorganisms. The vast majority of microorganisms are not harmful to humans but, rather, beneficial. Microbiota refers to all of the microorganisms that live in a particular . A microbiome is the entire collection of genes found in all of the microbes associated with a particular host.

**\* Exceptions:** Two known places devoid of microbial life are the hot, saline, hyperacid ponds of the Dallol geothermal field in Ethiopia, and the Atacama Desert in Chile.

## Cellular organization – prokaryotic and eukaryotic cells



There are two basic types of cells found in nature: prokaryotic and eukaryotic. Prokaryotes are  simpler (“single-cell”) than eukaryotes, which have a clearly defined nucleus.

The  a cell, the greater its surface-to-volume ratio. The smaller the surface-to-volume ratio, the more structurally complex (compartmentalised) a cell needs to be for it to carry out life functions.

Although a  is basically simple single-celled () organism, there are fundamental differences between

prokaryotic and  cells. One method of classification is by shape or morphology:

### Cocci:

- spherical shape
- 0.4 - 1.5  $\mu\text{m}$

**staphylococci**, for instance, form grape-like clusters, whereas **streptococci** form bead-like chains.

### Rods:

- 0.25 - 1.0  $\mu\text{m}$  width by 0.5 - 6.0  $\mu\text{m}$  long

**bacilli** are straight rods; **spirilla** form a spiral rod.

Based on the science of genetics, there is internationally recognised , or classification system, of the bacterial system with its family, genera and species divisions.

Some  have the ability to form resting cells known as **endospores**.

Spores form in moments of environmental stress, such as lack of nutrients and moisture needed for growth and is, as such, a survival . Spores have no

; thus, they can withstand adverse conditions like heat, disinfectants and ultraviolet light. Once the environment becomes more favourable a spore may

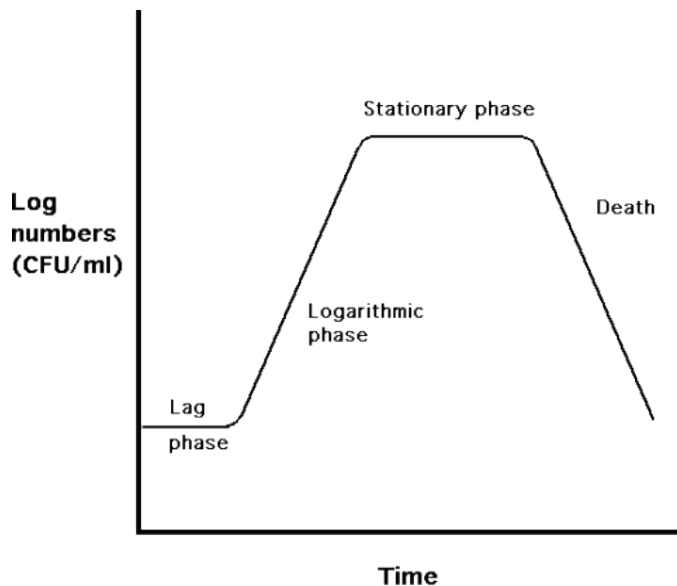
, giving rise to a single vegetative bacterial

. Some examples of spore-formers important to the food industry are members of ***Bacillus*** and ***Clostridium*** genera.

Bacterial growth generally proceeds through a series of phases:

- **Lag phase:** time for microorganisms to become accustomed to their new environment.

There is little or no  during this phase.



**Hypothetical bacterial growth curve.**

constant.

- **Log phase:** bacteria logarithmic, or exponential, growth begins; the rate of

is the

most rapid and constant.

- **Stationary phase:** the rate of multiplication slows down due to lack of

and

build-up

of

. At

the same time, bacteria are constantly dying so the numbers actually remain

- **Death phase:** cell numbers decrease as growth stops and existing cells will die off.

The shape of the curve on the graph (on the previous page) varies with

, nutrient

, and miscellaneous

growth factors.

## Microbial Growth

There are a number of factors that affect the survival and growth of microorganisms in food. The parameters that are inherent to the food, or **intrinsic factors**, include the following:

- nutrient content
- moisture content

- 

- available

- biological

- antimicrobial constituent

## Moisture Content

All microorganisms require  $H_2O$ , but the amount necessary for their growth varies between species. The amount of  available in food is expressed in terms of water activity ( $a_w$ ), where the  $a_w$  of pure water is 1.0. Each microorganism has a maximum, optimum, and minimum  $a_w$  for growth and survival. Generally speaking, bacteria  in foods with high  $a_w$  (minimum approximately 0.90  $a_w$ ), while yeasts and moulds, which require less moisture, dominate in low  $a_w$  foods (minimum 0.70  $a_w$ ). The water activity of, say, fluid milk is approximately 0.98  $a_w$ .

## pH

Most microorganisms have approximately a  pH optimum (pH 6.5 – 7.5). Yeasts (and some fungi) are able to grow in a more  environment, compared to bacteria. Moulds can grow over a wide pH range, but they prefer only slightly acid conditions. Milk has a pH of 6.6 — an ideal average pH  for the growth of many .

## Presence or absence of Oxygen

Microorganisms can be classified according to the amount of  needed for growth and survival:

### Obligate anaerobes: Oxygen is required

- : grow in the presence or absence of oxygen
- Microaerophilic: grow best at very low  of oxygen
- Aerotolerant anaerobes: oxygen is not  for growth but is not harmful if present
- Obligate anaerobes: grow only in complete  of oxygen; if present it can be lethal

## Temperature

As a group, microorganisms are capable of growth over an extremely wide temperature

. However, in a given environment, the types and numbers of

microorganisms will depend greatly upon temperature(s). According to temperature, microorganisms can be placed into one of three broad groups:

- **Psychrophiles, or cryophiles:** optimum growth at temperatures of between 20°C and 30°C with a growth capacity, nevertheless, at less than 7°C. Psychrophilic organisms, for instance, are prominent in the spoilage of refrigerated  products.
- **Mesophiles:** optimum growth between 30°C and 40°C and cease to grow at  temperatures.
- **Thermophiles:** optimum growth between 55°C and 65°C.

NB: For each group, growth rate

as temperature(s) increase(s) up

to an optimum, after which the growth rate rapidly

.

## Aufgabe Lückentext:

**Folgende Wörter bitte in den Lückentext einfüllen.**

**Jedes Wort kommt einmal vor.**

**Bitte Gross- und Kleinbuchstaben beachten.**

algae, absence, acid, bacterium, bacteria, cell, dairy, declines, dominate, environment, eukaryotic, fungi, Facultative, growth, germinate, humans, industry, increases, illness, level, levels, Microorganisms, microorganisms, multiplication, metabolism, nutrients, neutral, organic, oxygen, oxygen, pH, required, range, refrigeration, spoilage, structurally, structures, strategy, smaller, supply, taxonomy, temperature, toxins, unit, unicellular, viruses, water